



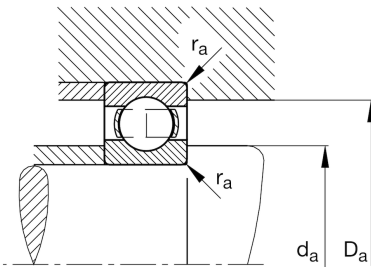
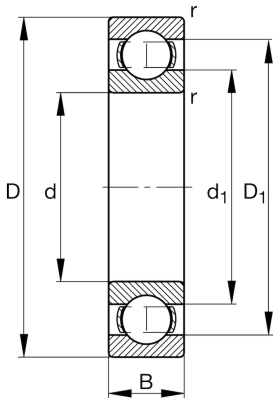
FAG

61804

Deep groove ball bearing

Schaeffler ID:
0554549330000Deep groove ball bearing 618, single row,
steel sheet metal cage

Technical information

**Dimensions**

r_{\min}	0.3 mm	Minimum chamfer dimension
D_1	28.2 mm	Shoulder diameter outer ring
d_1	23.2 mm	Shoulder diameter inner ring
	0.018 kg	Weight

Main Dimensions & Performance Data

d	20 mm	Bore diameter
D	32 mm	Outside diameter
B	7 mm	Width
C_r	4,020 N	Basic dynamic load rating, radial
C_{0r}	2,460 N	Basic static load rating, radial
C_{ur}	110 N	Fatigue load limit, radial
n_G	33,500 1/min	Limiting speed
n_{gr}	17,600 1/min	Reference speed

Mounting dimensions

$d_{a\min}$	22 mm	Minimum diameter shaft shoulder
$D_{a\max}$	30 mm	Maximum diameter of housing shoulder
$r_{a\max}$	0.3 mm	Maximum fillet radius

Calculation factors

f_0	15.4	Calculation factor
-------	------	--------------------

Temperature range

T_{\min}	-30 °C	Operating temperature min.
T_{\max}	120 °C	Operating temperature max.